



PRESENTERS:

JANICE JOHNSTON,

TCISD Special Education Instructional
Specialist

E. HOPE STEINHOFF, M.ED.,

TCISD TED/SPED Program Specialist

TRANSITION

PLANNING FOR LIFE AFTER HIGH SCHOOL



LET'S DO THIS JOURNEY TOGETHER!

AGENDA

Stages of Transition Planning

Websites / Lunch & Learn

State and Local Agencies

Medicaid Waiver Programs

Social Security

Supplemental Special Education Services Grant \$

20XX

#1 Barrier To Transition



- *Early planning can lead to smoother transitions.*
- ***It's better to plan early and not need services, than to need services and potentially wait years.***

Transferable Skills

It is important to work on functional skills to support independence

- *Social Skills*
- *Functional Academics*
- *Independent Living*
- *Communication*
- *Vocational Skills*
- *Expected vs. Unexpected Behaviors*

Examples:

- Picking up their own toys
- Helping with household chores
- Ordering for themselves at a family outing
- Having them make small purchases at the store

It is NEVER too early to start working on these!

TCISD Online Resources

[HOME](#) > [DEPARTMENTS](#) > [SPECIAL EDUCATION](#)

Monthly Lunch & Learn Webinars 2023-2024

Month	Time	Topic
Sept 29	12:00-1:00	<u>UHCL Center for Autism & Developmental Disabilities Supports for Families</u>
Oct 27	12:00-1:00	<u>Medicaid Waivers/Gulf Coast Center</u>
Dec 8	12:00-1:00	<u>Able Accounts/Financial Info</u>
Jan 26	12:00-1:00	<u>Texas Workforce Solutions- Vocational Rehabilitation</u>
Feb 22	None	STUDENT Seniors Transition Expo
March	None	None
April 26	12:00-1:00	College Readiness
May 10	12:00-1:00	ACC STRIVE Program

Link will be posted each month on the TCISD Special Education website

Guidance to Government Agencies

What services are available?

Who to contact?

How do I get my child connected?

Services cannot be guaranteed at the preferred location or at the time of request. This will result in being placed on a priority waiting list. Service providers can be chosen from a provided list or by recommending someone as a contractor.

Texas Health and Human Services Galveston County Contacts

- Community Service Regional Office: **Region 6**: 409-943-2830
- AAA = Area Agency on Aging: [Houston-Galveston AAA](#) 1-800-437-7396
- ADRC = Aging and Disability Resource Center: [Care Connection](#) 1-855-937-2372
- LIDDA = Local Intellectual and Developmental Disability Authority: [Gulf Coast Center](#) 1-888-839-3229
- LMHA = Local Mental Health Authority: [Gulf Coast Center](#) 1-800-643-0967

[Texas Health & Human Services](#)

Early Childhood Intervention Programs

- From **birth to 3 years old** children with developmental delays or specific health conditions can interventions to help meet developmental milestones through a wide range of services.

Who is eligible?

- A developmental delay—be far behind other kids his age.
- Auditory or visual impairment
- Medically diagnosed condition
- A specific health condition that will probably lead to a delay—this includes genetic disorders, birth defects and hearing loss, but typically not learning or attention issues like dyslexia and ADHD.

Local Contact

- Spindletop Center
First Steps ECI
655 South Eighth Street
Beaumont, TX 77701
Referral Number - (409) 784-5435
Fax Number - (409) 784-5418
Email: lora.waller@stctr.org
Web: www.stmhmr.org

Texas Health and Human Services

[Home](#) > [Search Services](#) > [Disability](#)

IDD SERVICES

People with intellectual or developmental disabilities (IDD) can choose where to live depending on what they want and which services they qualify for. People with IDD can live in:

- Their own home.
- A group home with other people with IDD.
- An intermediate care facility in their community for individuals with an intellectual disability (ICF/IID) or a related condition.
- A state supported living center.

[Explanation of IDD Services & Supports](#)

AUTISM SERVICES

A child is eligible for treatment through the Children's Autism Program (CAP) if the child:

- Has a documented diagnosis on the autism spectrum made by a qualified professional.
- Is 3 to 15 years old, with services ending on the child's 16th birthday.
- Is a Texas resident.

[Overview of Children's Autism Program](#)

DEAF & HARD OF HEARING

The Office of Deaf and Hard of Hearing Services is the center for awareness and education on deaf and hard of hearing issues and services in Texas. This office:

- Helps connect people to resources and services.
- Raises awareness.
- Improves communication access.

[Deaf & Hard of Hearing Services](#)

Galveston-Brazoria Cooperative for the Deaf & Hard of Hearing (GBCDHH)

The Galveston-Brazoria Cooperative for the Deaf and Hard of Hearing (GBCDHH) is a cooperative of nine school districts: Alvin, Clear Creek, Dickinson, Friendswood, Galveston, Hitchcock, Pearland, Santa Fe, and Texas City.

Services Available:

- Audiological Services
- Parent/Infant Services
- Itinerant Services
- Indirect Services
- Regional Day School for the Deaf

*GBCDHH programs are currently offered in [Clear Creek ISD](#).

281-284-0350



The Gulf Coast Center

Intellectual, Developmental Disabilities(IDD), & Autism(AU) Services

(formerly Mental Health & Mental Retardation Authority (MHMRA))

Provides direct support for increased community engagement to individuals enrolled in general revenue services or Pre-Admission Screening & Resident Review (PASRR) services.

Disability Type: Intellectual/Developmental Disabilities, Autism

Age Range for Services: Early Childhood to adults

Service Type:

- Employment Assistance
- Specialized Therapies
- Day Habilitation
 - (specific to individuals with IDD in nursing facilities)
- Independent Living Skills (ILS) Training
 - (specific to individuals with IDD in nursing facilities)
- Respite
- Community Supports
- Behavior Supports
- Service Coordination
- Supported Employment

www.gulfcoastcenter.org



Medicaid Waiver Programs



Medicaid Waiver Programs

Medically Dependent Children Program (MDCP)

Youth Empowerment Services (YES)

Community Living Assistance and Support Services (CLASS)

Deaf Blind with Multiple Disabilities (DBMD)

Home and Community-based Services (HCS)

STAR+PLUS Home and Community Based Services (HCBS)

Texas Home Living (TxHmL)

Texas Long Term Service & Supports

[Chart With More Details](#)

Long-Term Care is Someone to:

- Monitor your health or help you take medication
- Help you bathe, dress or use the bathroom
- Prepare or deliver meals
- Help you clean or maintain your home
- Drive you to doctor appointments
- Provide a break (also called respite care) for caregivers

Long-Term Care **Is Not:**

- Rehabilitation to help you recover from an accident or illness
- Routine doctor visits
- Help paying for utilities, such as phone or electricity
- Help paying for food or rent



STAR Kids

Texas Medicaid Managed Care Program Benefits


STAR Kids is designed to meet the unique needs of youth and children with disabilities. Benefits such as prescription drugs, hospital care, primary and specialty care, preventive care, personal care services, private duty nursing, and durable medical equipment and supplies.

Participation in the STAR Kids Program is required for those who are **20 or younger**, covered by **Medicaid**, and meet at least one of the following:

- Get Supplemental Security Income (SSI).
- Get Medicaid and Medicare.
- Live in a community-based intermediate care facility for individuals with an intellectual disability or related condition (ICF/IID) or nursing facility.
- Get services through one of the following waiver programs
 - Medically Dependent Children Program (MDCP) waiver
 - Youth Empowerment Services (YES) waiver.
 - Community Living Assistance and Support Services (CLASS)
 - Deaf Blind with Multiple Disabilities (DBMD)
 - Home and Community-based Services (HCS)
 - Texas Home Living (TxHmL)



Start the Intake Process for Gulf Coast Center IDD Services



IDD Intake Forms

Please answer questions to the best of your ability. After submitting, please send all other forms requiring signature to:

EMAIL: IDDAdmissions_Intake@gulfcoastcenter.org
FAX: (281) 332-5167
MAIL/IN-PERSON: 4352 Emmett F. Lowry Expy, Texas City, TX 77791

For questions about forms, call (888) 839-3229 and ask for IDD Intake.

* Required

Front Door Checklist/IDT Referral Form

1. Contact Email for Communications from Gulf Coast Center: *

Enter your answer

2. Name of Individual: *

Enter your answer

20XX

Gulf Coast Center Mental Health Services

WHO?

- Youth Services (age 3-17)
- Adult Services (18 and Older)

AVAILABLE SERVICES

- Crisis Response
- Therapy
- Physical Care
- Case Management
- Medication Management
- Peer Services
- Drug & Alcohol Treatment
- Education & Skills Training

Texas Workforce Commission

Vocational Rehabilitation Services (VR)

- **Service Type:** Support to find or keep employment; gain skills needed for a career; learn how to prepare for a job interview or get the accommodations needed to stay employed and independent.
- **Disability Type:** Physical or Mental disabilities –Autism, Learning Disability, Intellectual Disability, Emotional
- **Disability Age Range for services:** 14 years through adulthood

*Including Blind or Visually Impaired individuals Age Range: Birth- Adult

<http://www.twc.state.tx.us/programs>

1-800-628-5115

Registering with TWS-VR



Hello! Welcome to Start My VR! Thank you for your interest in Texas Workforce Solutions-Vocational Rehabilitation (VR) Services.

By completing the online self-referral, you are taking the first step in your Vocational Rehabilitation journey.

- ✓ If you have a physical, mental, or emotional disability that affects your ability to obtain or maintain employment, you may be eligible for our services to help you in finding and retaining meaningful employment.
- ✓ Please complete the form fields so that we may connect you with a counselor who can tell you more about how the VR process works.
- ✓ Once your information has been received, you will be contacted by VR staff to schedule time to discuss your interest in vocational rehabilitation (VR) services. If you would like, a friend or family member may join you in this conversation.

If you do decide to apply for VR services, eligibility for those services is based on these four factors:

1. You have a physical, cognitive, or mental impairment documented by the appropriately qualified professional (doctor, psychologist or other)
2. Your documented impairment causes a substantial barrier to getting or keeping employment
3. You can benefit from vocational rehabilitation services that lead to an employment outcome
4. You require vocational rehabilitation services to prepare for, secure, retain or regain employment

Supplemental Security Income (SSI) & Social Security Disability Insurance (SSDI)

SSI

- Determination is based on age/disability and limited income and resources
- Provides monthly payments to help pay for basic needs like medical care, food, clothing and shelter.

SSDI

- Determination is based on disability and work credits
- Provides monthly cash benefits to those workers – or children of workers – who have paid enough Social Security taxes to get disability earnings they can use when they are no longer able to work.

Work Incentive Planning & Assistance (WIPA)

The goal of the WIPA program is to enable beneficiaries with disabilities to receive accurate information and use that information to make a successful transition to work.

Each WIPA project has Community Work Incentives Coordinators who will:

- Provide in-depth counseling about benefits and the effect of work on those benefits;
- Conduct outreach efforts to beneficiaries of SSI and SSDI (and their families) who are potentially eligible to participate in Federal or State work incentives programs
- Work in cooperation with Federal, State, and private agencies and nonprofit organizations that serve disabled SSI and SSDI beneficiaries.

<https://www.ssa.gov/work/WIPA.html>

1-800-772-1213



Supplemental Special Education Services Grant

TEA offers parents/guardians of eligible students enrolled in a Texas public school and currently receiving special education a **one-time grant** in the amount of **\$1,500** to obtain **educational materials** and **resources** such as textbooks, curriculum, or technology devices and/or services such as additional speech therapy, tutoring, or other specific services from an online approved marketplace.

The SSES application will be closing on March 15, 2024,
and will re-open next school year on February 3, 2025.

[SSES Application](#)

SSES Application Process

Parent/Guardian

#1

First Name *

Middle Initial

Last Name *

Address *

Street Address 1 (P.O. Boxes will not be accepted.)

Street Address 2 (P.O. Boxes will not be accepted.)

City

State

Zip Code

Phone *

Please enter a valid phone number.

Email *

Verify Email

* The SSES program is an online program, and all communications will occur using the email address provided here. It is VERY IMPORTANT that you enter an email address that you will use and monitor often.

Make sure to use and verify the email

Your email has been successfully verified.

* The SSES program is an online program, and all communications will occur using the email address provided here. It is VERY IMPORTANT that you enter an email address that you will use and monitor often.

Will need to look up UID Number

UID stands for "Unique Identification". This is a 10-digit number given to every public school student in Texas. This number can be found by using the UID Student Lookup button, or by contacting your student's school.

Student Lookup

#2

First Name

Spell the first name exactly as the student is registered at school.

SSN or S#

Start by entering the student's Social Security Number (SSN) with no spaces or dashes. If providing the SSN does not work, or you do not have an SSN, use your student's S#.

Date of Birth

mm/dd/yyyy

#3

*UID

*First Name

Middle Name

*Last Name

*Date of Birth

mm/dd/yyyy

If you wish to submit an application for another student in your family, click 'Add Another Student'.

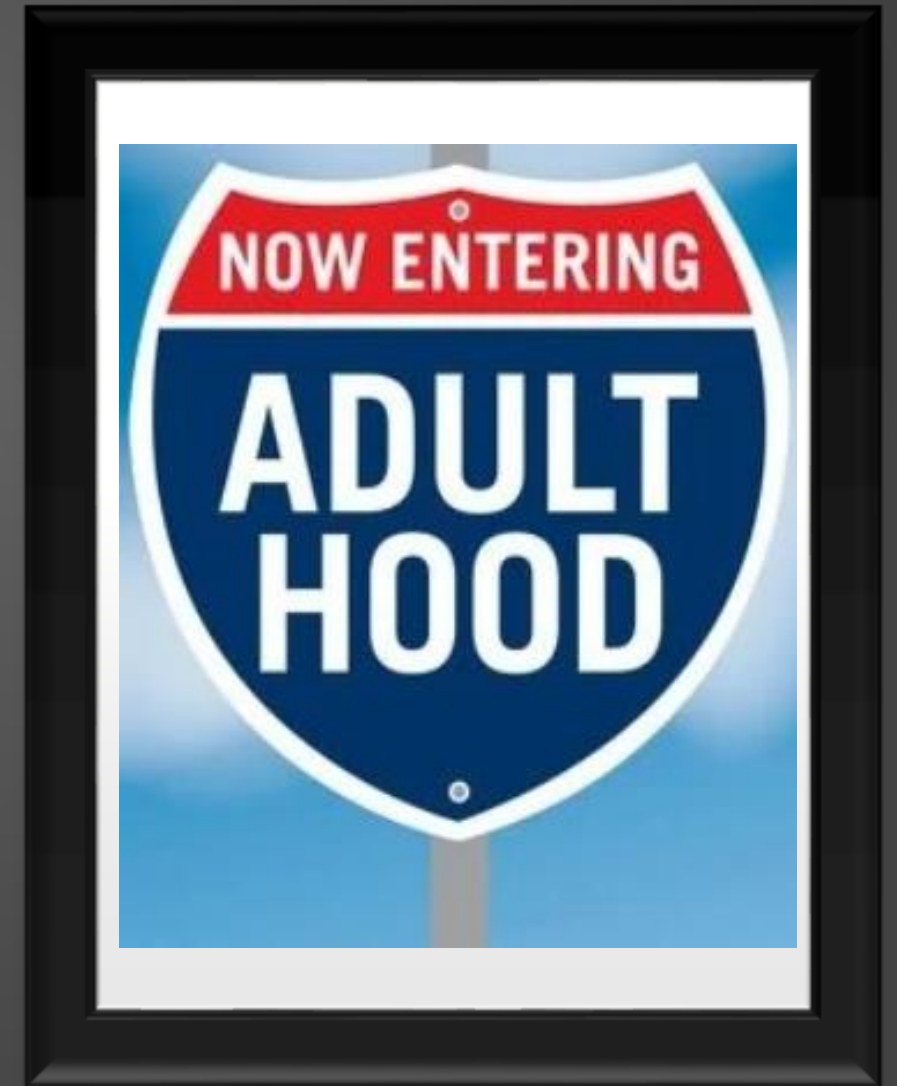
Add Another Student

Applying for another child add before submitting

18...

What Happens Now?

20XX



Once **18**, Parents will **NOT** be able to do the following without adult student's signed permission:

FINANCE

- Access banking information
- Be a primary signer on a lease or contract
- Access or authorize a credit card

EDUCATION

- Attend ARD meeting
- Decide on special education services &/or placement

HEALTHCARE

- Access medical information
- Make decisions about medical care &/or treatment
- Give permission for a medical procedure

What Type of Support Will an Adult Student Need?

GUARDIANSHIP

- Individual has no retained rights unless specified in court
- Difficult to revoke, has to be renewed each year
- Can be expensive and lengthy process
- 2 subsections (person and estate)
- Should be started 2 months before their 18th birthday

POWER OF ATTORNEY

- Does not involve loss of rights
- Relatively inexpensive
- Easy to change/revoke
- Individual makes decisions as long as they are capable to do so
- May not protect against poor decisions
- Subsections: medical, educational, financial

SUPPORTED DECISION MAKING

- Empowers people with disabilities to use available support to make their own choices
- Individuals can live more independent and self-directed lives.
- Notarized agreement between individual and trusted supporter.
- Individual retains all rights

Guardianship and Alternatives



Post-Secondary Education

- Apprenticeships
- Trade schools
- Two-year community colleges
- Four-year universities

20XX

Post-Secondary Education continued

Financial AID

- FAFSA
- ALL students are required to complete an application prior to graduating high school
 - Or sign a waiver prior to graduation
- Based on parent(s) income
- Determines eligibility for various types of grants and loans to pay for education/training after high school

Office of Disability Services

Disability Type: Various Learning Disabilities, Autism, etc.

Age Range: Junior or Senior year (dual credit) through adult

Service Type: Assists students with disabilities to receive accommodations in college. Accommodations may include, but are not limited to, extended testing time, books in alternative format, resource referrals, specialized technology and software, and the coordination of interpreting services.

Student MUST Self Disclose

** Student will need their last Annual ARD meeting paperwork (IEP) & Full Individual Evaluation**

Texas Identification Card/Driver's License

Individuals will need to have a state issued ID for various reasons:

- Employment
- Participation in programs
- Apply for SSI
- Identification purposes

Texas Form DL-101- Communication Impairment Identification.

Form VTR-215 Deaf Driver Awareness (with specialty license plate)

Form VTR-216 Communication Impediment (without specialty license plate)

These forms require a doctor signature

www.texasdrivingwithdisability.com

Student **MUST** be present at the DPS office to apply and turn in required paperwork

Transportation

How will your child get to/from work, appointments, or community activities?

- Start thinking about this in early high school
- Transportation programs/options can be limited in this area

Options to Consider:

- Driver's License
- Connect Transit
- Ride Share Programs such as Uber/Lift, Taxis, Family/Friends





What if a Student Needs Additional Support?

- Must have completed all graduation requirements
- Must have an **educational need** determined by data presented to the ARD Committee
- Students meeting these requirements are eligible to receive services until they **meet their goals** but no later than their 21st birthday

TCISD 18 + Program

(Housed at LMHS)

Provides Additional Training:

- Employment Skills
- Social Skills
- Self-Advocacy
- Activities of Daily Living Skills
- Independent Living Skills
- Recreation & Leisure
- Community Integration
- Travel Training

Start thinking about what your child's day will look like for



Navigate Life Texas

Transition to Adulthood

Resource Handout



TCISD Special Education Website * Transition

Visit TCISD website for more information regarding transition resources.
TCISD.org -->Departments -->Special Education -->Transition

Navigate Life Texas

Information and supports for parents of children with disabilities or special health care needs. Health care, education, insurance, transition to adulthood and how to connect with other parents are among the many topics. Most of the content is written by parents of children and adults with disabilities or special health care needs.

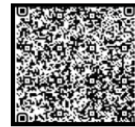


Gulf Coast Mental Health

24-hour Crisis 1-866-729-384
Emergency and stabilization services, inpatient and outpatient psychiatric care, counseling, and skills & education training. Service adults, children, and adolescents.

Gulf Coast Intake IDD Admissions

This agency offers respite, day habilitation, residential support, and long-term care services. The waiting list is long and need to sign up ASAP for Waiver Programs. For clients with Intellectual Disability & Autism.



Texas Workforce Solutions

By completing the online self-referral, you are taking the first step in your Vocational Rehabilitation journey. If an individual has a physical, mental, or emotional disability that affects their ability to obtain or maintain employment, they may be eligible for our services to help in finding and retaining meaningful employment.

Resource Directory Galveston County

Provides the most current information about local staff and agency support available to students and families throughout the entire special education transition process from Early Childhood Special Education to exit from high school in the areas of: Advocacy, Financial, Legal, Education, Employment, and Community.



Let's Take This Journey Together

Please take a minute to complete the survey.



TRANSITION RESOURCES



Program Overview: Supplemental Special Education Services (SSES)

**Your student may be
eligible for a \$1,500 grant!**

Supplemental Special Education Services (SSES) is:

SSES gives a **\$1,500 one-time online grant** to parents of eligible students served by special education who are enrolled in a Texas public school. Families can use this money to purchase educational goods and services for their student.

SSES Eligibility Criteria:

To be eligible for the SSES grant, students must currently be:

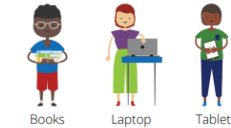
- » enrolled in a Texas public school,
- » enrolled in PreK - 12th grade, and
- » a student with a disability served through Special Education.



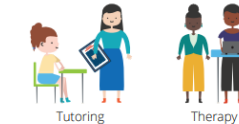
What your family can purchase:

With SSES accounts, families are able to purchase educational goods and services from the SSES marketplace.

Educational goods such as:



Services such as:



This is a first come, first serve grant. There are a limited number of accounts available, if you believe your student is eligible, we encourage you to apply today!

If you already have an account, please visit:
app.classwallet.com

For more information and to apply, visit:
SSES.tea.texas.gov





Q & A

Thank you for your time
Please scan the QR code and give us your feedback.

District Contact Information

RUBEN PESINA

TCISD Director of Special Education

rpesina@tcisd.org

JANICE JOHNSTON

TCISD Special Ed. Instructional Specialist

Crisis Prevention Intervention Instructor

409-916-0562 x1562

jjohnston@tcisd.org

JERRETTA TEMPLE

TCISD Coordinator of Special Education/504

jtemple@tcisd.org

E. HOPE STEINHOFF, M.ED.

TCISD Transition & Employment Designee

Blocker SPED Program Specialist & Department Head

409-916-0769 x1769

esteinhoff@tcisd.org